

sleeves with flaps - 100 sleeves per package

| ITEM CODE | SIZE | CAD | USD | ITEM CODE | SIZE | CAD | USD |
|-----------|--|---------|---------|-----------|---|---------|---------|
| BM6 | 1 ^{7/8} " x 7 ^{1/16} " (open short side) | \$6.00 | \$4.20 | B54S | 4 ^{1/2} " x 5 ^{9/16} " (open short side) | \$8.00 | \$5.60 |
| BM4 | 2 ^{3/16} " x 7 ^{7/8} " (open short side) | \$8.00 | \$5.60 | B54 | 4 ^{5/8} " x 5 ^{3/4} " (open short side) | \$9.00 | \$6.30 |
| BM5 | 2 ^{1/4} " x 8 ^{1/2} " (open short side) | \$8.00 | \$5.60 | B4X6XL | 4 ^{5/8} " x 6 ^{3/8} " (open short side) | \$8.00 | \$5.60 |
| B2X12 | 2 ^{1/2} " x 12 ^{1/4} " (open short side) | \$12.00 | \$8.40 | B44XL | 4 ^{7/8} " x 4 ^{13/16} " (open short side) | \$10.00 | \$7.00 |
| B2X2 | 2 ^{1/2} " x 2 ^{1/2} " | \$5.00 | \$3.50 | B413 | 4 ^{7/8} " x 13 ^{1/8} " (open short side) | \$15.00 | \$10.50 |
| B2 | 2 ^{1/2} " x 3 ^{1/2} " (open short side) | \$6.00 | \$4.20 | B65 | 4 ^{15/16} " x 6 ^{9/16} " (open short side) | \$12.00 | \$8.40 |
| BM3 | 2 ^{1/2} " x 6" (open short side) | \$6.00 | \$4.20 | B47 | 4 ^{15/16} " x 7 ^{1/8} " (open short side) | \$10.00 | \$7.00 |
| BM7 | 2 ^{1/2} " x 7 ^{7/8} " (open short side) | \$6.00 | \$4.20 | B53 | 5 ^{1/8} " x 3 ^{5/16} " (open long side) | \$8.00 | \$5.60 |
| B2X8 | 2 ^{1/2} " x 8 ^{1/2} " (open short side) | \$8.00 | \$5.60 | B5X4 | 5" x 4 ^{1/4} " (open long side) | \$8.00 | \$5.60 |
| B2X3 | 2 ^{5/8} " x 3 ^{3/16} " (open short side) | \$6.00 | \$4.20 | B5X8 | 5 ^{1/8} " x 8" (open short side) | \$12.00 | \$8.40 |
| B2X4 | 2 ^{5/8} " x 4" (open short side) | \$6.00 | \$4.20 | B75S | 5 ^{1/4} " x 7 ^{1/8} " (open short side) | \$12.00 | \$8.40 |
| BM2 | 2 ^{3/4} " x 8 ^{1/2} " (open short side) | \$8.00 | \$5.60 | B35 | 5 ^{3/16} " x 3 ^{3/4} " (open long side) | \$8.00 | \$5.60 |
| B2X2XL | 2 ^{7/8} " x 2 ^{3/4} " (open short side) | \$6.00 | \$4.20 | B5X5SM | 5 ^{3/16} " x 5 ^{1/16} " (open long side) | \$10.00 | \$7.00 |
| B2XL | 2 ^{15/16} " x 3 ^{3/4} " (open short side) | \$6.00 | \$4.20 | B4 | 5 ^{3/8} " x 4 ^{1/4} " (open long side) | \$8.00 | \$5.60 |
| B2X4XL | 2 ^{15/16} " x 4 ^{1/4} " (open short side) | \$6.00 | \$4.20 | B5X5 | 5 ^{7/16} " x 5 ^{5/16} " (open long side) | \$10.00 | \$7.00 |
| B25 | 2 ^{15/16} " x 5 ^{3/4} " (open short side) | \$8.00 | \$5.60 | B5-2 | 5 ^{7/16} " x 6 ^{1/2} " (open short side) | \$10.00 | \$7.00 |
| B38 | 3 ^{3/16} " x 8 ^{15/16} " (open short side) | \$10.00 | \$7.00 | B75 | 5 ^{7/16} " x 7 ^{1/4} " (open short side) | \$11.00 | \$7.70 |
| B33 | 3 ^{1/4} " x 3 ^{1/4} " | \$6.00 | \$4.20 | B510 | 5 ^{7/16} " x 10 ^{3/4} " (open short side) | \$16.00 | \$11.20 |
| B43 | 3 ^{1/4} " x 4 ^{1/8} " (open short side) | \$6.00 | \$4.20 | B514 | 5 ^{7/16} " x 14 ^{1/4} " (open short side) | \$20.00 | \$14.00 |
| B3 | 3 ^{5/16} " x 5 ^{1/8} " (open short side) | \$8.00 | \$5.60 | B515 | 5 ^{7/16} " x 15 ^{1/4} " (open short side) | \$20.00 | \$14.00 |
| B37 | 3 ^{5/16} " x 7 ^{1/8} " (open short side) | \$10.00 | \$7.00 | B58 | 5 ^{5/8} " x 8 ^{1/4} " (open short side) | \$14.00 | \$9.80 |
| B310 | 3 ^{3/8} " x 10" (open short side) | \$10.00 | \$7.00 | B5X5M | 5 ^{11/16} " x 5 ^{9/16} " (open long side) | \$10.00 | \$7.00 |
| B83 | 3 ^{3/4} " x 8 ^{1/4} " (open short side) | \$12.00 | \$8.40 | B59S | 5 ^{11/16} " x 8 ^{9/16} " (open short side) | \$14.00 | \$9.80 |
| B3X2 | 3 ^{15/16} " x 5 ^{3/4} " (open short side) | \$6.00 | \$4.20 | B55XL | 5 ^{7/8} " x 5 ^{3/4} " (open long side) | \$12.00 | \$8.40 |
| B3X4 | 3 ^{11/16} " x 4 ^{3/16} " (open short side) | \$8.00 | \$5.60 | B45 | 5 ^{7/8} " x 4 ^{1/2} " (open long side) | \$10.00 | \$7.00 |
| B3X2XL | 3 ^{13/16} " x 2 ^{3/8} " (open long side) | \$6.00 | \$4.20 | B75XL | 5 ^{7/8} " x 7 ^{3/4} " (open short side) | \$12.00 | \$8.40 |
| BD1 | 3 ^{13/16} " x 3 ^{13/16} " (jewel case bag) | \$6.00 | \$4.20 | B512 | 5 ^{11/16} " x 12 ^{1/16} " (open short side) | \$18.00 | \$12.60 |
| B3X5 | 3 ^{13/16} " x 5 ^{3/16} " (open short side) | \$8.00 | \$5.60 | B5X5XL | 5 ^{15/16} " x 5 ^{7/8} " (open long side) | \$12.00 | \$8.40 |
| B3X5XL | 3 ^{13/16} " x 5 ^{9/16} " (open short side) | \$8.00 | \$5.60 | B59 | 5 ^{15/16} " x 8 ^{3/4} " (open long side) | \$14.00 | \$9.80 |
| B48 | 4 ^{1/16} " x 8 ^{15/16} " (open short side) | \$12.00 | \$8.40 | B95 | 5 ^{15/16} " x 9 ^{1/4} " (open short side) | \$14.00 | \$9.80 |
| B49S | 4 ^{1/8} " x 9 ^{1/2} " (open short side) | \$14.00 | \$9.80 | B64 | 6" x 4 ^{1/2} " (open long side) | \$10.00 | \$7.00 |
| B34 | 4 ^{1/4} " x 3 ^{1/8} " (open long side) | \$6.00 | \$4.20 | B46 | 6 ^{1/4} " x 4 ^{1/2} " (open long side) | \$10.00 | \$7.00 |
| B4X5 | 4 ^{1/4} " x 5 ^{1/8} " (open short side) | \$8.00 | \$5.60 | B66 | 6 ^{1/4} " x 6 ^{1/4} " | \$12.00 | \$8.40 |
| B4X6 | 4 ^{1/4} " x 6 ^{1/8} " (open short side) | \$8.00 | \$5.60 | B96 | 6 ^{3/16} " x 9 ^{9/16} " (open short side) | \$16.00 | \$11.20 |
| B44 | 4 ^{5/16} " x 4 ^{5/16} " | \$8.00 | \$5.60 | B6X10 | 6 ^{3/16} " x 10" (open short side) | \$16.00 | \$11.20 |
| B49 | 4 ^{5/16} " x 9 ^{3/4} " (open short side) | \$14.00 | \$9.80 | B64B | 6 ^{1/2} " x 4 ^{5/16} " (open long side) | \$10.00 | \$7.00 |
| B410 | 4 ^{7/16} " x 10 ^{3/8} " (open short side) | \$14.00 | \$9.80 | B6X6 | 6 ^{7/16} " x 6 ^{1/4} " (open long side) | \$12.00 | \$8.40 |
| B412 | 4 ^{7/16} " x 12 ^{1/4} " (open short side) | \$15.00 | \$10.50 | B86 | 6 ^{7/16} " x 8 ^{1/4} " (open short side) | \$16.00 | \$11.20 |

sleeves with flaps - 100 sleeves per package

| ITEM CODE | SIZE | CAD | USD |
|-----------|--|---------|---------|
| B6X9 | 6 ^{7/16} " x 9" (open short side) | \$16.00 | \$11.20 |
| B612 | 6 ^{7/16} " x 12 ^{1/4} " (open short side) | \$20.00 | \$14.00 |
| B6X6M | 6 ^{11/16} " x 6 ^{9/16} " (open long side) | \$13.00 | \$9.10 |
| B56 | 6 ^{13/16} " x 5" (open long side) | \$13.00 | \$9.10 |
| B610 | 6 ^{13/16} " x 10" (open short side) | \$22.00 | \$15.40 |
| B7X7SM | 7 ^{3/16} " x 7 ^{1/16} " (open long side) | \$16.00 | \$11.20 |
| B710 | 7 ^{3/16} " x 10 ^{1/4} " (open short side) | \$18.00 | \$12.60 |
| B5S | 7 ^{1/4} " x 5 ^{1/8} " (open long side) | \$12.00 | \$8.40 |
| B5 | 7 ^{7/16} " x 5 ^{1/4} " (open long side) | \$12.00 | \$8.40 |
| B711 | 7 ^{7/16} " x 11" (open short side) | \$24.00 | \$16.80 |
| B77 | 7 ^{7/16} " x 7 ^{1/4} " (open long side) | \$16.00 | \$11.20 |
| B79 | 7 ^{7/16} " x 9 ^{1/4} " (open short side) | \$18.00 | \$12.60 |
| B712 | 7 ^{7/16} " x 12 ^{1/4} " (open short side) | \$20.00 | \$14.00 |
| B714 | 7 ^{7/16} " x 14 ^{1/4} " (open short side) | \$24.00 | \$16.80 |
| B720 | 7 ^{7/16} " x 20 ^{1/4} " (open short side) | \$30.00 | \$21.00 |
| B7X7M | 7 ^{11/16} " x 7 ^{9/16} " (open long side) | \$16.00 | \$11.20 |
| B5XL | 7 ^{7/8} " x 5 ^{3/4} " (open long side) | \$12.00 | \$8.40 |
| B715 | 7 ^{7/8} " x 15 ^{1/4} " (open short side) | \$31.00 | \$21.70 |
| B79XL | 7 ^{15/16} " x 9 ^{5/8} " (open short side) | \$22.00 | \$15.40 |
| B8X6 | 8" x 6" (open long side) | \$18.00 | \$12.60 |
| B8X11 | 8" x 11 ^{1/4} " (open short side) | \$22.00 | \$15.40 |
| B108S | 8 ^{1/4} " x 10 ^{1/8} " (open short side) | \$22.00 | \$15.40 |
| B88S | 8 ^{1/4} " x 8 ^{1/16} " (open long side) | \$20.00 | \$14.00 |
| B6 | 8 ^{7/16} " x 6 ^{1/4} " (open long side) | \$16.00 | \$11.20 |
| B8X8 | 8 ^{7/16} " x 8 ^{1/4} " (open long side) | \$16.00 | \$11.20 |
| B108 | 8 ^{7/16} " x 10 ^{1/4} " (open short side) | \$20.00 | \$14.00 |
| B812 | 8 ^{7/16} " x 12 ^{1/4} " (open short side) | \$20.00 | \$14.00 |
| B820 | 8 ^{7/16} " x 20 ^{1/4} " (open short side) | \$26.00 | \$18.20 |
| B85 | 8 ^{11/16} " x 5 ^{1/2} " (open long side) | \$14.00 | \$9.80 |
| B8X8M | 8 ^{11/16} " x 8 ^{9/16} " (open long side) | \$18.00 | \$12.60 |
| BA4 | 8 ^{11/16} " x 11 ^{15/16} " (open short side) | \$24.00 | \$16.80 |
| B811S | 8 ^{3/4} " x 11 ^{1/16} " (open short side) | \$24.00 | \$16.80 |
| B811 | 8 ^{15/16} " x 11 ^{1/4} " (open short side) | \$24.00 | \$16.80 |
| B814 | 8 ^{15/16} " x 14 ^{1/4} " (open short side) | \$26.00 | \$18.20 |
| B69 | 9 ^{1/4} " x 6 ^{1/4} " (open long side) | \$18.00 | \$12.60 |
| B99S | 9 ^{1/4} " x 9 ^{1/16} " (open short side) | \$20.00 | \$14.00 |
| B9SM | 9 ^{1/4} " x 12 ^{1/4} " (open short side) | \$26.00 | \$18.20 |
| B9 | 9 ^{7/16} " x 12 ^{1/4} " (open long side) | \$26.00 | \$18.20 |

| ITEM CODE | SIZE | CAD | USD |
|-----------|--|---------|---------|
| B913 | 9 ^{7/16} " x 13 ^{1/4} " (open short side) | \$26.00 | \$18.20 |
| B9X9M | 9 ^{11/16} " x 9 ^{9/16} " (open long side) | \$20.00 | \$14.00 |
| B49XL | 9 ^{7/8} " x 4 ^{7/16} " (open long side) | \$14.00 | \$9.80 |
| B913XL | 9 ^{15/16} " x 13 ^{1/4} " (open short side) | \$28.00 | \$19.60 |
| B8S | 10 ^{1/4} " x 8 ^{1/8} " (open long side) | \$20.00 | \$14.00 |
| B8 | 10 ^{7/16} " x 8 ^{1/4} " (open long side) | \$20.00 | \$14.00 |
| B1010 | 10 ^{7/16} " x 10 ^{1/4} " (open long side) | \$24.00 | \$16.80 |
| B1012 | 10 ^{7/16} " x 12 ^{1/4} " (open short side) | \$26.00 | \$18.20 |
| B10 | 10 ^{7/16} " x 15 ^{1/4} " (open short side) | \$30.00 | \$21.00 |
| B1020 | 10 ^{7/16} " x 20 ^{1/4} " (open short side) | \$36.00 | \$25.20 |
| B1024 | 10 ^{7/16} " x 24 ^{1/4} " (open short side) | \$48.00 | \$33.60 |
| B11S | 11 ^{1/4} " x 14 ^{1/8} " (open short side) | \$30.00 | \$21.00 |
| B118 | 11 ^{7/16} " x 8 ^{3/4} " (open long side) | \$24.00 | \$16.80 |
| B11 | 11 ^{7/16} " x 14 ^{1/4} " (open short side) | \$30.00 | \$21.00 |
| B1117 | 11 ^{7/16} " x 17 ^{1/4} " (open short side) | \$36.00 | \$25.20 |
| B1124 | 11 ^{7/16} " x 24 ^{1/4} " (open short side) | \$44.00 | \$30.80 |
| B1130 | 11 ^{7/16} " x 30 ^{1/4} " (open short side) | \$60.00 | \$42.00 |
| B1212 | 12 ^{1/4} " x 12 ^{1/4} " | \$34.00 | \$23.80 |
| B12S | 12 ^{1/4} " x 16 ^{1/8} " (open short side) | \$38.00 | \$26.60 |
| B12X12 | 12 ^{7/16} " x 12 ^{1/4} " (open long side) | \$34.00 | \$23.80 |
| B129 | 12 ^{7/16} " x 9 ^{1/4} " (open long side) | \$26.00 | \$18.20 |
| B12 | 12 ^{7/16} " x 16 ^{1/4} " (open short side) | \$38.00 | \$26.60 |
| B1218 | 12 ^{7/16} " x 18 ^{1/4} " (open short side) | \$40.00 | \$28.00 |
| B1220 | 12 ^{7/16} " x 20 ^{1/4} " (open short side) | \$44.00 | \$30.80 |
| B1232 | 12 ^{7/16} " x 32 ^{1/4} " (open short side) | \$90.00 | \$63.00 |
| B1236 | 12 ^{7/16} " x 36 ^{1/4} " (open short side) | \$90.00 | \$63.00 |
| BLP | 12 ^{1/2} " x 12 ^{1/2} " | \$34.00 | \$23.80 |
| B13 | 13 ^{7/16} " x 16 ^{1/4} " (open short side) | \$40.00 | \$28.00 |
| B1317 | 13 ^{7/16} " x 17 ^{1/4} " (open short side) | \$40.00 | \$28.00 |
| B1319 | 13 ^{7/16} " x 19 ^{1/4} " (open short side) | \$48.00 | \$33.60 |
| B1324 | 13 ^{7/16} " x 24 ^{1/4} " (open short side) | \$58.00 | \$40.60 |
| B1411S | 14 ^{1/4} " x 11 ^{1/16} " (open long side) | \$30.00 | \$21.00 |
| B1411 | 14 ^{7/16} " x 11 ^{1/8} " (open long side) | \$30.00 | \$21.00 |
| B1416 | 14 ^{7/16} " x 16 ^{1/8} " (open short side) | \$40.00 | \$28.00 |
| B14 | 14 ^{7/16} " x 18 ^{1/4} " (open short side) | \$48.00 | \$33.60 |

| SLEEVE DISCOUNTS: | |
|-------------------|---------------|
| 1,000+ = 10% | 10,000+ = 15% |
| 5,000+ = 12.5% | 25,000+ = 20% |

sleeves with no flaps - 100 sleeves per package

| ITEM CODE | SIZE | CAD | USD |
|-----------|---|---------|---------|
| B3X5NF | 3 ¹³ / ₁₆ " x 5 ⁵ / ₁₆ " (open short side) | \$6.00 | \$4.20 |
| B3X5NFXL | 3 ¹³ / ₁₆ " x 5 ¹ / ₂ " (open short side) | \$6.00 | \$4.20 |
| B54NF | 4 ⁵ / ₈ " x 5 ³ / ₄ " (open short side) | \$10.00 | \$7.00 |
| B65NF | 4 ¹⁵ / ₁₆ " x 6 ¹³ / ₁₆ " (open short side) | \$10.00 | \$7.00 |
| B5X5NF | 5 ⁷ / ₁₆ " x 5 ⁵ / ₁₆ " (open short side) | \$10.00 | \$7.00 |
| B75SNF | 5 ¹ / ₄ " x 7 ³ / ₃₂ " (open short side) | \$10.00 | \$7.00 |
| B75NF | 5 ⁷ / ₁₆ " x 7 ¹ / ₄ " (open short side) | \$10.00 | \$7.00 |
| B57NF | 5 ¹ / ₂ " x 7 ⁵ / ₈ " (open short side) | \$10.00 | \$7.00 |
| B811SNF | 8 ³ / ₄ " x 11 ³ / ₁₆ " (open short side) | \$16.00 | \$11.20 |
| B811NF | 8 ¹⁵ / ₁₆ " x 11 ³ / ₈ " (open short side) | \$16.00 | \$11.20 |

hanging bags - 100 sleeves per package

| ITEM CODE | SIZE | CAD | USD |
|-----------|---|---------|---------|
| J1 | 2" x 2" | \$6.00 | \$4.20 |
| HB2X2 | 2 ¹ / ₂ " x 2 ⁵ / ₈ " (open short side) | \$6.00 | \$4.20 |
| J3 | 3" x 3" | \$6.00 | \$4.20 |
| HB32 | 3 ⁹ / ₁₆ " x 2 ¹ / ₂ " (open long side) | \$6.00 | \$4.20 |
| HB3X5XL | 3 ¹³ / ₁₆ " x 5 ⁹ / ₁₆ " (open short side) | \$8.00 | \$5.60 |
| HB4B2 | 4 ¹ / ₄ " x 5 ³ / ₈ " (open short side) | \$8.00 | \$5.60 |
| HB49 | 4 ⁵ / ₁₆ " x 9 ³ / ₄ " (open short side) | \$14.00 | \$9.80 |
| HB54 | 4 ⁵ / ₈ " x 5 ³ / ₄ " (open short side) | \$9.00 | \$6.30 |
| HB65 | 4 ¹⁵ / ₁₆ " x 6 ¹³ / ₁₆ " (open short side) | \$12.00 | \$8.40 |
| HB5X5SM | 5 ³ / ₁₆ " x 5 ¹ / ₁₆ " (open short side) | \$10.00 | \$7.00 |
| HB75 | 5 ⁷ / ₁₆ " x 7 ¹ / ₄ " (open short side) | \$11.00 | \$7.70 |
| HB5X5XL | 5 ¹⁵ / ₁₆ " x 5 ⁷ / ₈ " (open short side) | \$12.00 | \$8.40 |
| HB59 | 5 ¹⁵ / ₁₆ " x 7 ⁷ / ₈ " (open short side) | \$14.00 | \$9.80 |
| HB66 | 6 ¹ / ₄ " x 6 ¹ / ₄ " | \$12.00 | \$8.40 |
| HB6X8 | 6 ⁵ / ₈ " x 8 ³ / ₄ " (open short side) | | |
| HB811S | 8 ³ / ₄ " x 11 ¹ / ₄ " (open short side) | \$24.00 | \$16.80 |
| HB811 | 8 ¹⁵ / ₁₆ " x 11 ¹ / ₄ " (open short side) | \$24.00 | \$16.80 |

protective closure sleeves - 100 sleeves per package

| ITEM CODE | SIZE | CAD | USD |
|-----------|--|---------|---------|
| B4X6PC | 4 ¹ / ₄ " x 6 ¹ / ₈ " (open short side) | \$8.00 | \$5.60 |
| B54PC | 4 ⁵ / ₈ " x 5 ³ / ₄ " (open short side) | \$9.00 | \$6.30 |
| B65PC | 4 ¹⁵ / ₁₆ " x 6 ⁹ / ₁₆ " (open short side) | \$12.00 | \$8.40 |
| B75PC | 5 ⁷ / ₁₆ " x 7 ¹ / ₄ " (open short side) | \$11.00 | \$7.70 |
| B45SPC | 5 ¹ / ₁₆ " x 4 ¹ / ₄ " (open long side) | \$8.00 | \$5.60 |
| B59PC | 5 ¹⁵ / ₁₆ " x 8 ³ / ₄ " (open short side) | \$14.00 | \$9.80 |
| B5PC | 7 ⁷ / ₁₆ " x 5 ¹ / ₄ " (open long side) | \$12.00 | \$8.40 |
| B108PC | 8 ⁷ / ₁₆ " x 10 ¹ / ₄ " (open short side) | \$20.00 | \$14.00 |
| B811PC | 8 ¹⁵ / ₁₆ " x 11 ¹ / ₄ " (open short side) | \$24.00 | \$16.80 |

card jackets - 100 sleeves per package

| ITEM CODE | SIZE | CAD | USD |
|-----------|---|---------|--------|
| CJB4 | 5 ¹ / ₄ " x 7 ³ / ₈ " | \$8.00 | \$5.60 |
| CJ45 | 5 ³ / ₄ " x 8 ³ / ₄ " | \$9.00 | \$6.30 |
| CJA2 | 5 ¹⁵ / ₁₆ " x 8 ⁷ / ₈ " | \$10.00 | \$7.00 |
| CJA6 | 6 ¹ / ₁₆ " x 9 ³ / ₄ " | \$11.00 | \$7.70 |
| CJA7 | 7 ⁷ / ₁₆ " x 10 ¹ / ₂ " | \$12.00 | \$8.40 |
| CJA8 | 8 ⁵ / ₁₆ " x 10 ¹⁵ / ₁₆ " | \$14.00 | \$9.80 |

other sleeves - 100 sleeves per package

| ITEM CODE | SIZE | CAD | USD |
|-----------|---|---------|---------|
| B23CC | 2 ¹ / ₄ " x 3 ¹ / ₂ " (business card, adhesive on back) | \$7.00 | \$4.90 |
| COMIC PC | 6 ¹⁵ / ₁₆ " x 10 ³ / ₁₆ " (no adhesive on flap) | \$22.00 | \$15.40 |
| CONE1 | 12" long, 6" wide at top | \$10.00 | \$7.00 |
| CONE2 | 17" long, 7 ¹ / ₄ " wide at top | \$25.00 | \$17.50 |

hanging boxes

| ITEM | SIZE | CAD EACH 1-9 | CAD PKG. 10 | USD EACH 1-9 | USD PKG. 10 |
|-------|--|--------------|-------------|--------------|-------------|
| HCB10 | 3 ³ / ₄ " x 5 ⁸ / ₈ " x 5 ³ / ₁₆ " | \$0.65 | \$5.90 | \$0.52 | \$4.72 |
| HCB6 | 4 ¹ / ₂ " x 1 ¹ / ₂ " x 5 ⁷ / ₈ " | \$0.65 | \$5.90 | \$0.52 | \$4.72 |
| HCB3 | 4 ¹ / ₂ " x 5 ⁸ / ₈ " x 5 ⁷ / ₈ " | \$0.65 | \$5.90 | \$0.52 | \$4.72 |
| HCB17 | 4 ¹ / ₂ " x 1" x 5 ⁷ / ₈ " | \$0.98 | \$8.80 | \$0.78 | \$7.04 |
| HCB16 | 4 ⁷ / ₈ " x 1" x 6 ⁵ / ₈ " | \$0.98 | \$8.80 | \$0.78 | \$7.04 |
| HCB1 | 5 ³ / ₈ " x 5 ⁸ / ₈ " x 7 ³ / ₈ " | \$0.98 | \$8.80 | \$0.78 | \$7.04 |
| HCB15 | 5 ³ / ₈ " x 1" x 7 ³ / ₈ " | \$0.98 | \$8.80 | \$0.78 | \$7.04 |

oversize sleeves with flaps - available in units of 10 or 100 sleeves

| ITEM CODE | SIZE | CAD 10 | CAD100 | USD10 | USD100 |
|-----------|--|---------|----------|---------|----------|
| B15 | 15 ^{7/16"} x 22 ^{1/4"} (open short side) | \$6.90 | \$58.00 | \$4.83 | \$40.60 |
| B16S | 16 ^{1/4"} x 20 ^{1/16"} (open short side) | \$6.60 | \$52.00 | \$4.62 | \$36.40 |
| B16 | 16 ^{7/16"} x 20 ^{1/8"} (open short side) | \$6.60 | \$52.00 | \$4.62 | \$36.40 |
| B16XL | 16 ^{7/8"} x 20 ^{3/4"} (open short side) | \$6.60 | \$52.00 | \$4.62 | \$36.40 |
| B1624 | 16 ^{7/16"} x 24 ^{1/4"} (open short side) | \$8.10 | \$70.00 | \$5.67 | \$49.00 |
| B1640 | 16 ^{7/16"} x 40 ^{1/4"} (open short side) | \$11.90 | \$104.00 | \$8.33 | \$72.80 |
| B1722 | 17 ^{7/16"} x 22 ^{1/4"} (open short side) | \$7.60 | \$64.00 | \$5.32 | \$44.80 |
| B18 | 18 ^{7/16"} x 24 ^{1/4"} (open short side) | \$8.90 | \$76.00 | \$6.23 | \$53.20 |
| B2016 | 20 ^{7/16"} x 16 ^{1/4"} (open long side) | \$6.60 | \$52.00 | \$4.62 | \$36.40 |
| B20 | 20 ^{7/16"} x 24 ^{1/4"} (open short side) | \$10.50 | \$92.00 | \$7.35 | \$64.40 |
| B2026 | 20 ^{7/16"} x 26 ^{1/4"} (open short side) | \$10.50 | \$92.00 | \$7.35 | \$64.40 |
| B2028 | 20 ^{7/16"} x 28 ^{1/4"} (open short side) | \$11.00 | \$96.00 | \$7.70 | \$67.20 |
| B2030 | 20 ^{7/16"} x 30 ^{1/4"} (open short side) | \$13.00 | \$110.00 | \$9.10 | \$77.00 |
| B2226 | 22 ^{7/16"} x 26 ^{1/4"} (open short side) | \$11.00 | \$96.00 | \$7.70 | \$67.20 |
| B22 | 22 ^{7/16"} x 28 ^{1/4"} (open short side) | \$11.60 | \$100.00 | \$8.12 | \$70.00 |
| B2230 | 22 ^{7/16"} x 30 ^{1/4"} (open short side) | \$13.00 | \$110.00 | \$9.10 | \$77.00 |
| B2230XL | 22 ^{7/8"} x 30 ^{1/2"} (open short side) | \$13.00 | \$110.00 | \$9.10 | \$77.00 |
| B2430 | 24 ^{7/16"} x 30 ^{1/4"} (open short side) | \$13.00 | \$110.00 | \$9.10 | \$77.00 |
| B24 | 24 ^{7/16"} x 36 ^{1/4"} (open short side) | \$15.00 | \$130.00 | \$10.50 | \$91.00 |
| B26 | 26 ^{7/16"} x 32 ^{1/4"} (open short side) | \$15.00 | \$130.00 | \$10.50 | \$91.00 |
| B27 | 27 ^{7/16"} x 41 ^{1/4"} (open short side) | \$25.00 | \$200.00 | \$17.50 | \$140.00 |
| B28 | 28 ^{7/16"} x 36 ^{1/4"} (open short side) | \$15.00 | \$130.00 | \$10.50 | \$91.00 |
| B30 | 30 ^{7/16"} x 36 ^{1/4"} (open short side) | \$19.00 | \$150.00 | \$13.30 | \$105.00 |
| B3040 | 30 ^{7/16"} x 40 ^{1/4"} (open short side) | \$26.50 | \$220.00 | \$18.55 | \$154.00 |
| B32 | 32 ^{7/16"} x 42 ^{1/4"} (open short side) | \$30.00 | \$260.00 | \$21.00 | \$182.00 |
| B3341 | 33 ^{7/16"} x 41 ^{1/4"} (open short side) | \$29.50 | \$255.00 | \$20.65 | \$178.50 |
| B36 | 36 ^{7/16"} x 32 ^{1/4"} (open short side) | \$25.00 | \$200.00 | \$17.50 | \$140.00 |
| B17 | 44 ^{7/16"} x 17 ^{1/4"} (open long side) | \$18.00 | \$135.00 | \$12.60 | \$94.50 |

NEED HELP DETERMINING WHAT SIZE FITS YOUR PRODUCTS?

Here's a formula* to help you find the perfect sleeve:

WIDTH: product width + product thickness + at least 1/16"

LENGTH: product length + 1/2 of product thickness

* this formula only works for flat products less than 1/2" thick.

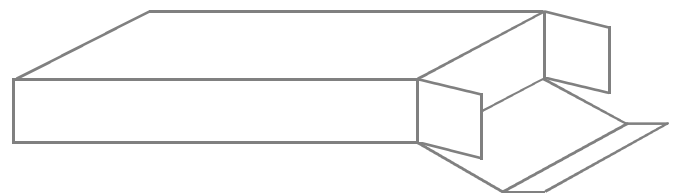
CAN'T FIND A SLEEVE?

Any custom size crystal-clear sleeve can be made. A minimum of 2000 sleeves is required. Please ask for details.

crystal clear boxes

| ITEM | SIZE | CAD EACH 1-9 | CAD PKG. 10 | USD EACH 1-9 | USD PKG. 10 |
|------|--|--------------|-------------|--------------|-------------|
| CB1 | 5 ^{3/8} x 5 ⁸ x 7 ^{3/8} (A7) | \$0.98 | \$8.80 | \$0.78 | \$7.04 |
| CB2 | 4 ^{7/8} x 5 ⁸ x 6 ^{5/8} (A6) | \$0.72 | \$6.50 | \$0.58 | \$5.20 |
| CB3 | 4 ^{1/2} x 5 ⁸ x 5 ^{7/8} (A2) | \$0.59 | \$5.30 | \$0.47 | \$4.24 |
| CB4 | 5 ^{3/8} x 1 ² x 7 ^{3/8} | \$0.98 | \$8.80 | \$0.78 | \$7.04 |
| CB5 | 4 ^{7/8} x 1 ² x 6 ^{5/8} | \$0.72 | \$6.50 | \$0.58 | \$5.20 |
| CB6 | 4 ^{1/2} x 1 ² x 5 ^{7/8} | \$0.59 | \$5.30 | \$0.47 | \$4.24 |
| CB7 | 5 ^{5/8} x 5 ⁸ x 8 ^{3/16} (A8env) | \$0.98 | \$8.80 | \$0.78 | \$7.04 |
| CB8 | 5 ^{13/16} x 1 ² x 8 ^{3/16} | \$0.98 | \$8.80 | \$0.78 | \$7.04 |
| CB9 | 6 ^{3/16} x 5 ⁸ x 9 ^{3/16} | \$0.98 | \$8.80 | \$0.78 | \$7.04 |
| CB10 | 3 ^{3/4} x 5 ⁸ x 5 ^{7/16} (4baronial) | \$0.59 | \$5.30 | \$0.47 | \$4.24 |
| CB11 | 5 ^{1/8} x 5 ⁸ x 5 ^{1/16} (5x5env) | \$0.72 | \$6.50 | \$0.58 | \$5.20 |
| CB12 | 5 ^{5/8} x 5 ⁸ x 5 ^{3/16} (5.5x5.5env) | \$0.98 | \$8.80 | \$0.78 | \$7.04 |
| CB13 | 6 ^{1/8} x 5 ⁸ x 6 ^{1/16} (6x6env) | \$0.98 | \$8.80 | \$0.78 | \$7.04 |
| CB14 | 5 x 5 ⁸ x 7 ^{1/2} | \$0.98 | \$8.80 | \$0.78 | \$7.04 |
| CB15 | 5 ^{3/8} x 1 x 7 ^{3/8} | \$0.98 | \$8.80 | \$0.78 | \$7.04 |
| CB16 | 4 ^{7/8} x 1 x 6 ^{5/8} | \$0.98 | \$8.80 | \$0.78 | \$7.04 |
| CB17 | 4 ^{1/2} x 1 x 5 ^{7/8} | \$0.72 | \$6.50 | \$0.58 | \$5.20 |
| CB18 | 4 ^{1/4} x 1 ² x 9 ^{9/16} (#10) | \$0.98 | \$8.80 | \$0.78 | \$7.04 |
| CB19 | 4 ^{1/4} x 5 ⁸ x 9 ^{9/16} | \$0.98 | \$8.80 | \$0.78 | \$7.04 |
| CB20 | 4 ^{1/4} x 1 x 9 ^{9/16} | \$0.98 | \$8.80 | \$0.78 | \$7.04 |
| CB24 | 4 ^{1/2} x 1 ⁴ x 5 ^{7/8} (A2env) | \$0.59 | \$5.30 | \$0.47 | \$4.24 |
| CB25 | 5 ^{3/8} x 1 ^{3/16} x 7 ^{3/8} (A7env) | \$0.98 | \$8.80 | \$0.78 | \$7.04 |
| CB27 | 4 ^{1/2} x 1 ^{3/16} x 5 ^{7/8} | \$0.72 | \$6.50 | \$0.58 | \$5.20 |
| CB28 | 5 ^{3/8} x 1 ^{1/4} x 7 ^{3/8} | \$1.11 | \$10.00 | \$0.89 | \$8.00 |
| CB29 | 4 ^{7/8} x 1 ^{1/4} x 6 ^{5/8} | \$0.98 | \$8.80 | \$0.78 | \$7.04 |
| CB30 | 4 ^{1/2} x 1 ^{1/4} x 5 ^{7/8} | \$0.98 | \$8.80 | \$0.78 | \$7.04 |
| CB31 | 3 ^{3/4} x 1 x 5 ^{3/16} | \$0.65 | \$5.90 | \$0.52 | \$4.72 |
| CB32 | 4 ^{3/8} x 5 ⁸ x 5 ^{5/8} (1/4 sheet) | \$0.65 | \$5.90 | \$0.52 | \$4.72 |
| CB33 | 3 ^{3/8} x 5 ⁸ x 5 ^{5/8} (3.5x5) | \$0.59 | \$5.30 | \$0.47 | \$4.24 |
| CB35 | 3 ^{1/8} x 1 ^{3/16} x 3 ^{1/8} | \$0.46 | \$4.10 | \$0.37 | \$3.28 |
| CB36 | 2 ^{1/8} x 1 ^{3/16} x 3 ^{5/8} (b.card) | \$0.46 | \$4.10 | \$0.37 | \$3.28 |
| CB38 | 3 ^{3/4} x 1 ^{1/4} x 5 ^{3/16} | \$0.72 | \$6.50 | \$0.58 | \$5.20 |
| CB42 | 2 ^{1/2} x 1 ^{1/8} x 2 ^{3/8} | \$0.46 | \$4.10 | \$0.37 | \$3.28 |
| CB43 | 1 ^{5/8} x 1 ^{1/8} x 4 ^{3/8} | \$0.59 | \$5.30 | \$0.47 | \$4.24 |
| CB44 | 5 ^{7/8} x 1 x 8 ^{7/8} (A9) | \$1.11 | \$10.00 | \$0.89 | \$8.00 |
| CB45 | 6 ^{1/8} x 1 x 9 ^{1/16} (6x9) | \$1.11 | \$10.00 | \$0.89 | \$8.00 |
| CB46 | 5 ^{5/8} x 1 x 8 ^{5/8} (1/2 sheet) | \$1.11 | \$10.00 | \$0.89 | \$8.00 |
| CB48 | 5 ^{5/8} x 1 x 5 ^{3/16} | \$0.98 | \$8.80 | \$0.78 | \$7.04 |
| CB49 | 6 ^{1/8} x 1 x 6 ^{1/16} | \$0.98 | \$8.80 | \$0.78 | \$7.04 |
| CB50 | 5 ^{3/8} x 1 x 5 ^{5/16} (5.25x5.25) | \$0.98 | \$8.80 | \$0.78 | \$7.04 |

| ITEM | SIZE | CAD EACH 1-9 | CAD PKG. 10 | USD EACH 1-9 | USD PKG. 10 |
|------|--|--------------|-------------|--------------|-------------|
| CB51 | 5 ^{3/8} x 5 ⁸ x 5 ^{5/16} | \$0.72 | \$6.50 | \$0.58 | \$5.20 |
| CB52 | 5 ^{3/8} x 2 x 7 ^{3/8} | \$1.11 | \$10.00 | \$0.89 | \$8.00 |
| CB53 | 4 ^{7/8} x 2 x 6 ^{5/8} | \$1.11 | \$10.00 | \$0.89 | \$8.00 |
| CB54 | 4 ^{1/2} x 2 x 5 ^{7/8} | \$1.11 | \$10.00 | \$0.89 | \$8.00 |
| CB55 | 5 ^{1/2} x 3 x 7 ^{1/4} | \$1.50 | \$13.50 | \$1.20 | \$10.80 |
| CB56 | 4x4x4 | \$1.17 | \$10.50 | \$0.94 | \$8.40 |
| CB57 | 4x4x8 | \$1.89 | \$17.00 | \$1.51 | \$13.60 |
| CB58 | 3x3x3 | \$0.98 | \$8.80 | \$0.78 | \$7.04 |
| CB59 | 3x3x6 | \$1.11 | \$10.00 | \$0.89 | \$8.00 |
| CB60 | 5 ^{3/8} x 5 ⁸ x 7 ^{5/8} | \$0.98 | \$8.80 | \$0.78 | \$7.04 |
| CB66 | 3 ^{13/16} x 5 ⁸ x 6 ^{13/16} | \$0.72 | \$6.50 | \$0.58 | \$5.20 |
| CB69 | 7 ^{1/8} x 5 ⁸ x 7 ^{1/16} | \$1.11 | \$10.00 | \$0.89 | \$8.00 |
| CB70 | 7 ^{1/8} x 1 x 7 ^{1/16} | \$1.11 | \$10.00 | \$0.89 | \$8.00 |
| CB71 | 5 ^{7/8} x 1 ² x 8 ^{7/8} | \$1.11 | \$10.00 | \$0.89 | \$8.00 |
| CB80 | 6 ^{3/8} x 5 ⁸ x 6 ^{5/16} | \$1.11 | \$10.00 | \$0.89 | \$8.00 |
| CB81 | 6 ^{3/8} x 1 x 6 ^{5/16} | \$1.11 | \$10.00 | \$0.89 | \$8.00 |
| CB82 | 6 ^{5/8} x 5 ⁸ x 6 ^{9/16} | \$1.11 | \$10.00 | \$0.89 | \$8.00 |
| CB83 | 6 ^{5/8} x 1 x 6 ^{9/16} | \$1.11 | \$10.00 | \$0.89 | \$8.00 |
| CB84 | 6 ^{3/4} x 5 ⁸ x 6 ^{7/8} | \$1.11 | \$10.00 | \$0.89 | \$8.00 |
| CB85 | 3 ^{5/8} x 5 ⁸ x 6 ^{1/16} | \$0.65 | \$5.90 | \$0.52 | \$4.72 |
| CB86 | 3 ^{1/4} x 1 ^{1/8} x 3 ^{1/4} | \$0.59 | \$5.30 | \$0.47 | \$4.24 |



- high quality, high density PVC
- easy to fold!
- store flat
- scratch-resistant

-5% DISCOUNT ON ORDERS OF
100 OR MORE BOXES